

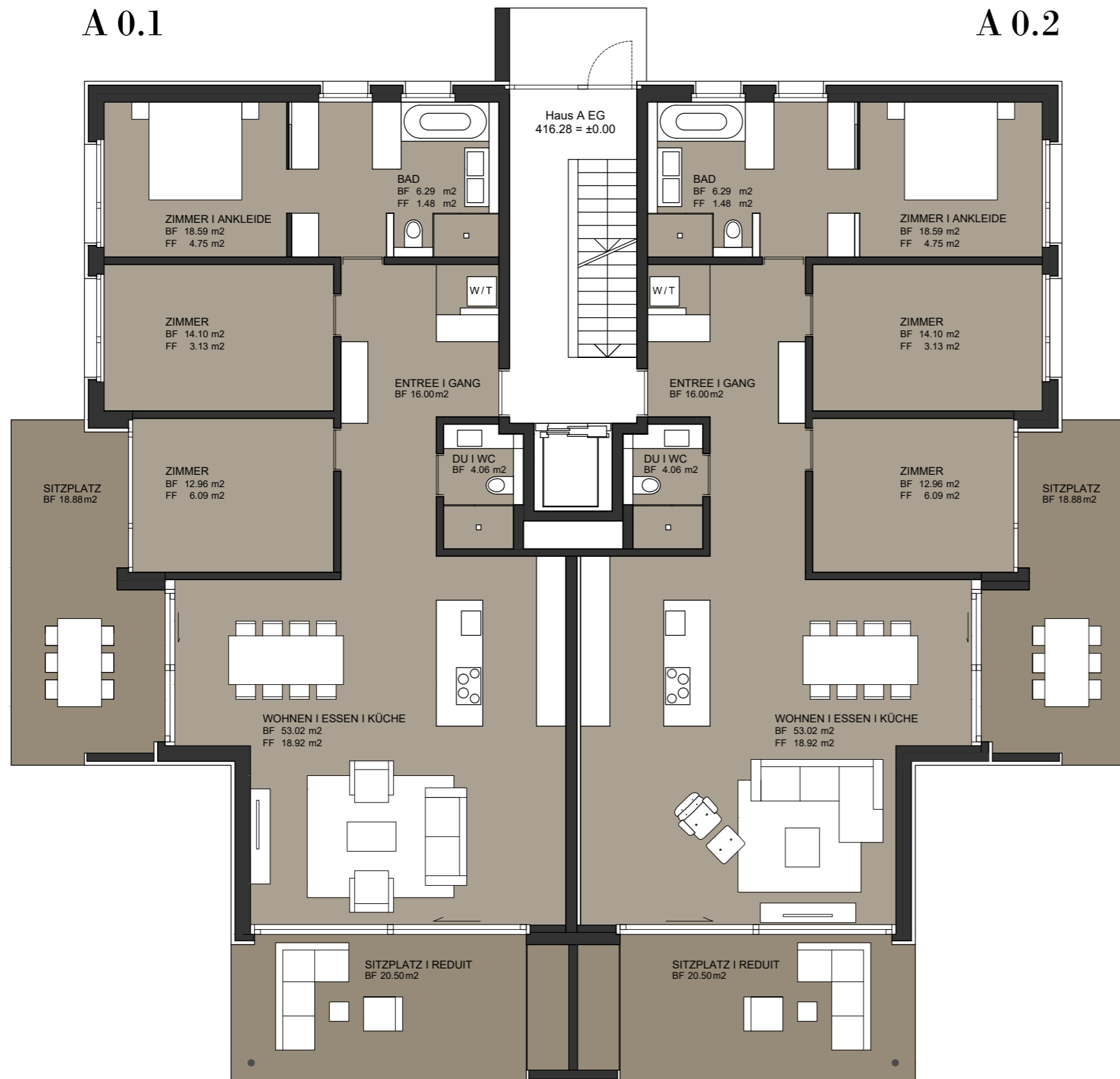


# GARDEN VIEW

Bottighofen

A 0.1

A 0.2



## 4 1/2 ZIMMER-WOHNUNG EG A 0.1 / A 0.2

Bruttogeschossfläche

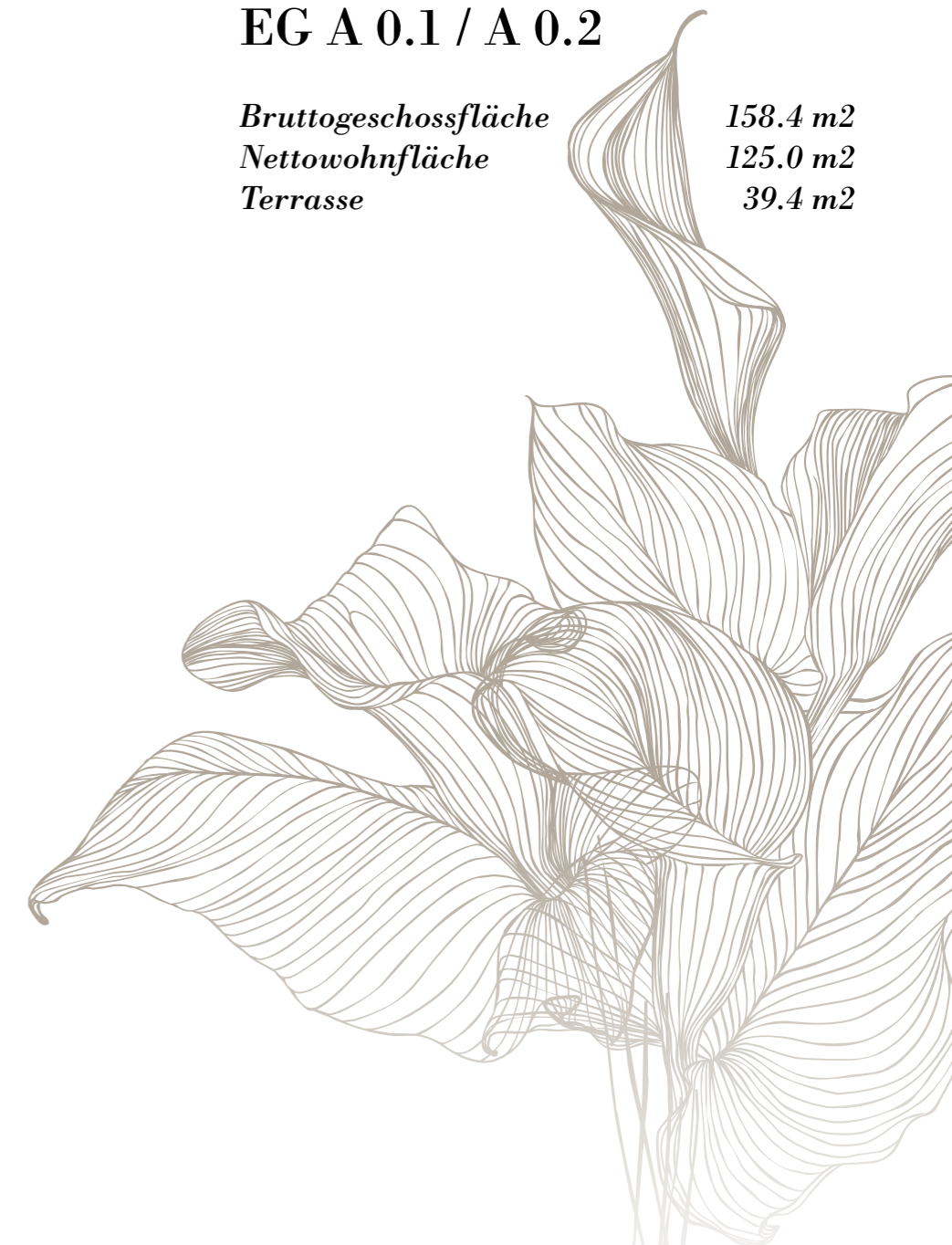
158.4 m<sup>2</sup>

Nettowoohnfläche

125.0 m<sup>2</sup>

Terrasse

39.4 m<sup>2</sup>



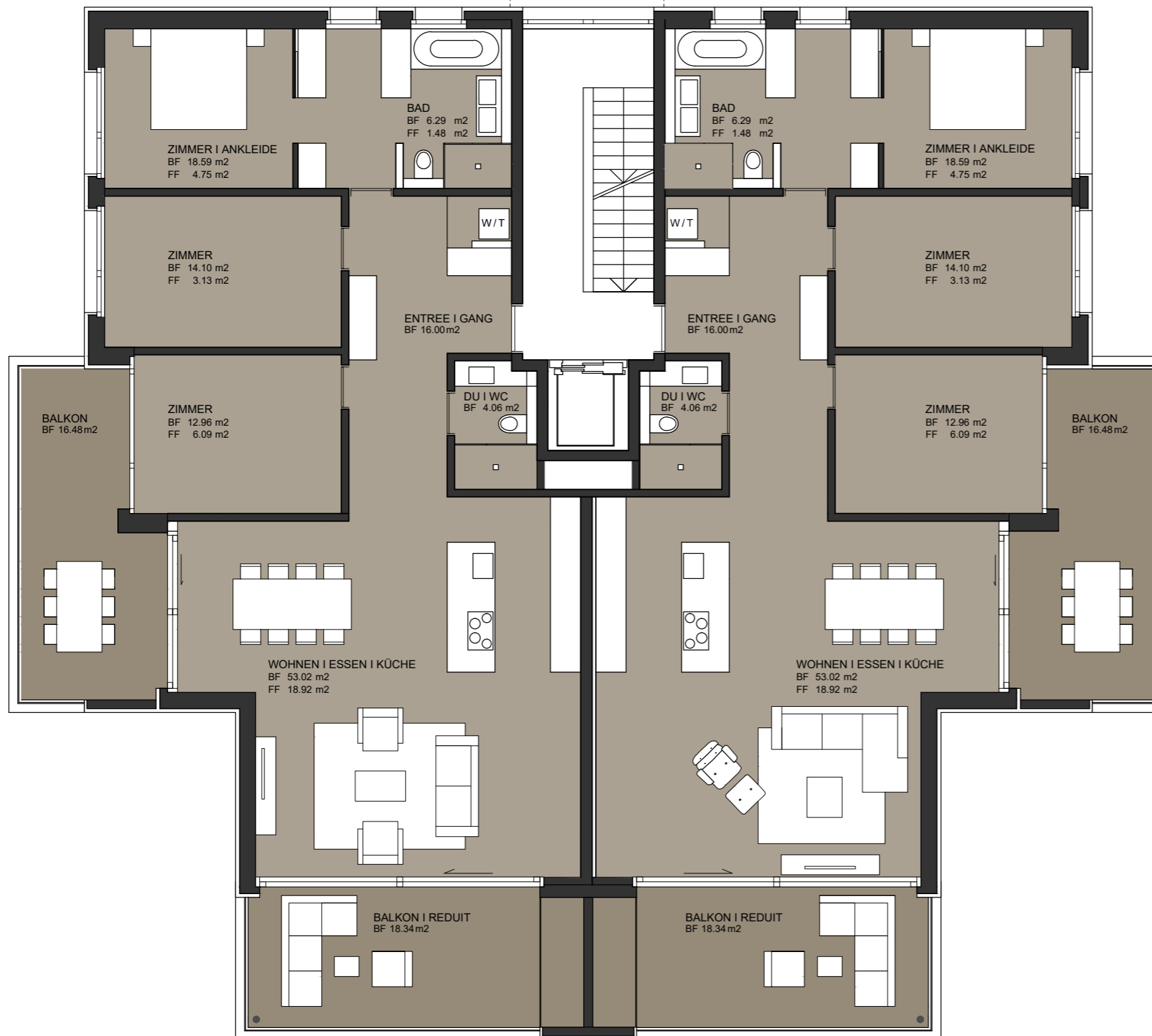


# GARDEN VIEW

*Bottighofen*

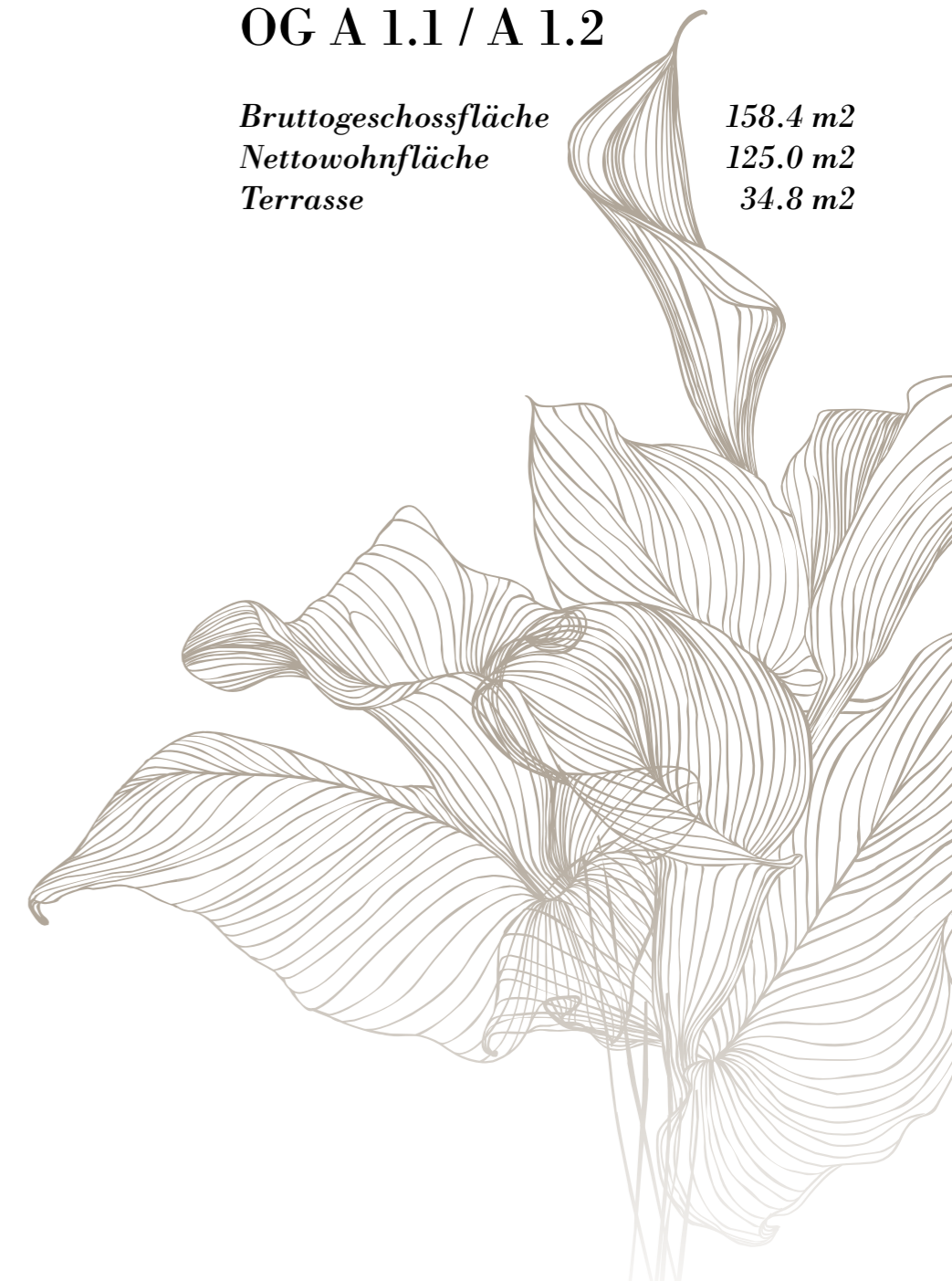
A 1.1

A 1.2



## 4 1/2 ZIMMER-WOHNUNG OG A 1.1 / A 1.2

<i>Bruttogeschossfläche</i>	<b>158.4 m<sup>2</sup></b>
<i>Nettowohnfläche</i>	<b>125.0 m<sup>2</sup></b>
<i>Terrasse</i>	<b>34.8 m<sup>2</sup></b>



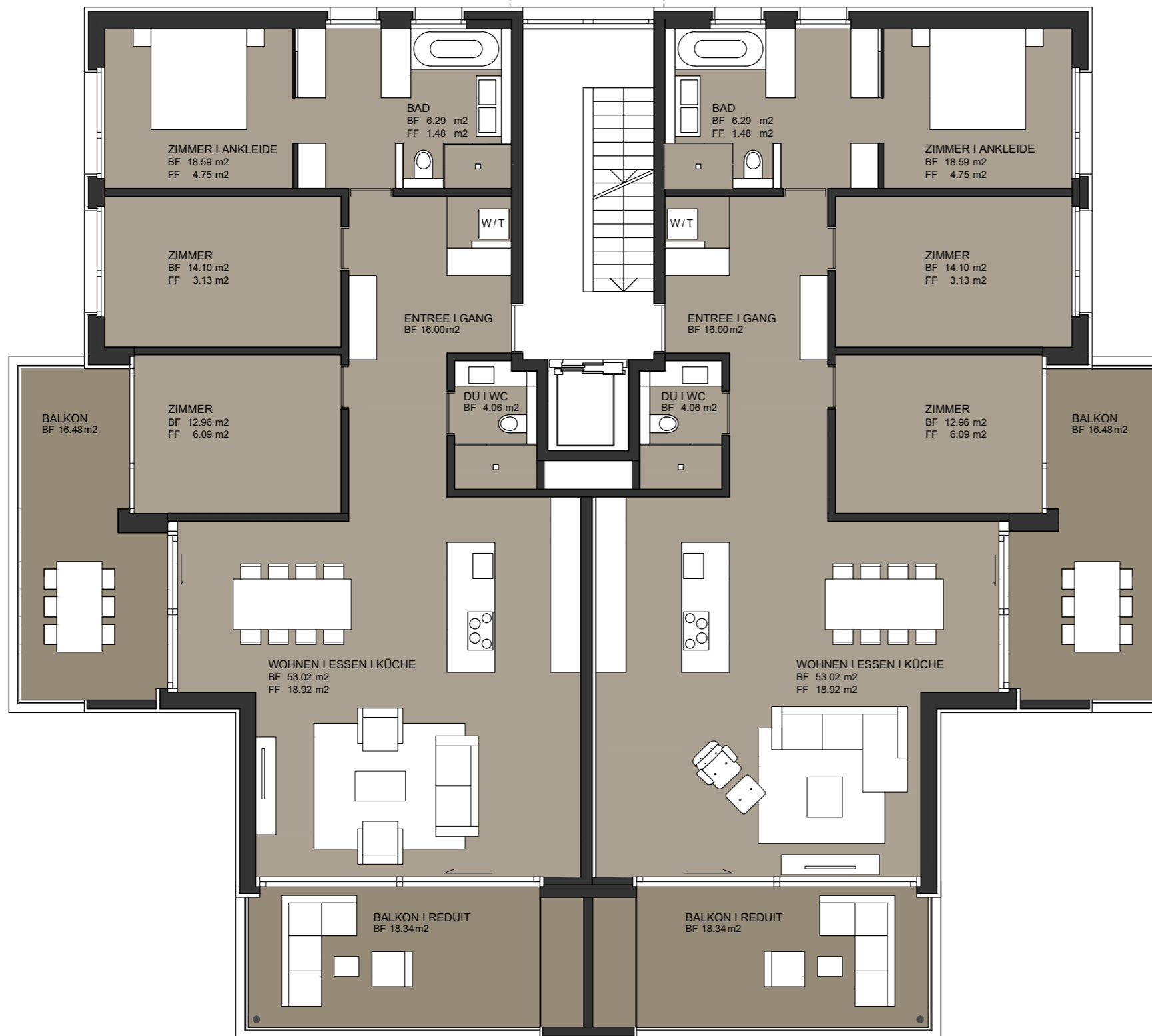


# GARDEN VIEW

*Bottighofen*

A 2.1

A 2.2



## 4 1/2 ZIMMER-WOHNUNG OG A 2.1 / A 2.2

*Bruttogeschossfläche*

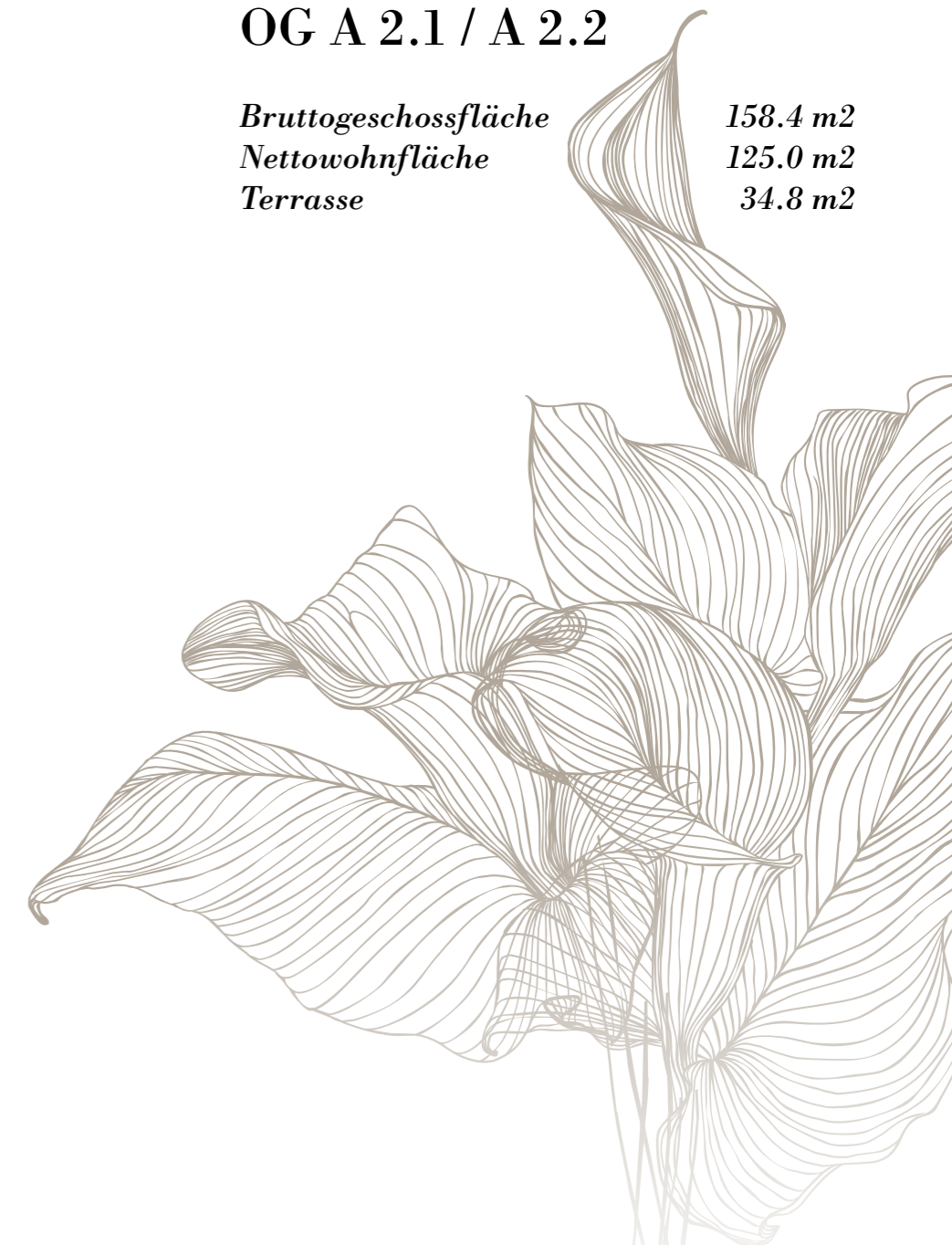
158.4 m<sup>2</sup>

*Nettowohnfläche*

125.0 m<sup>2</sup>

*Terrasse*

34.8 m<sup>2</sup>



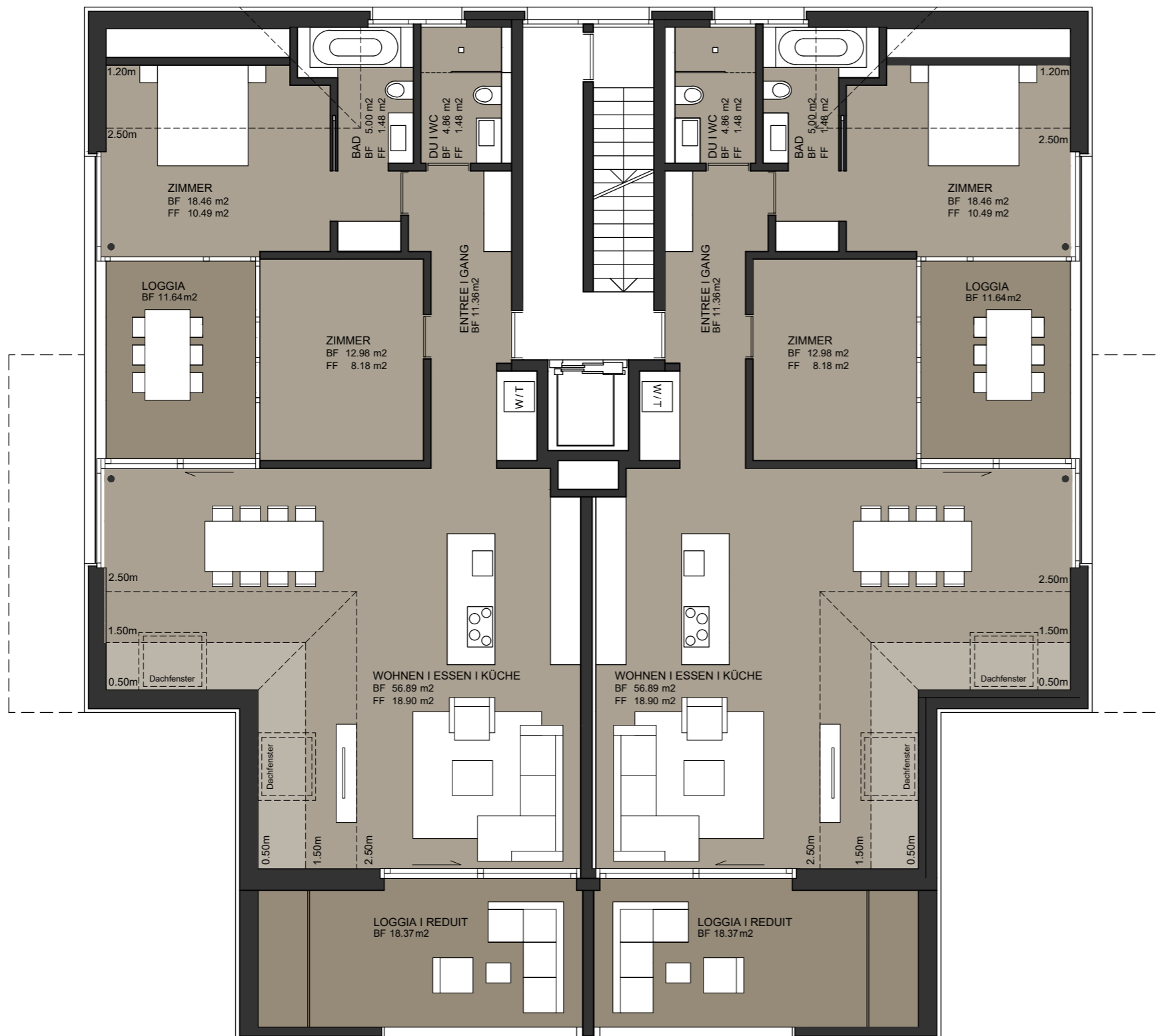


# GARDEN VIEW

Bottighofen

A 3.1

A 3.2



## 3 1/2 ZIMMER-WOHNUNG DG A 3.1 / A 3.2

Bruttogeschossfläche

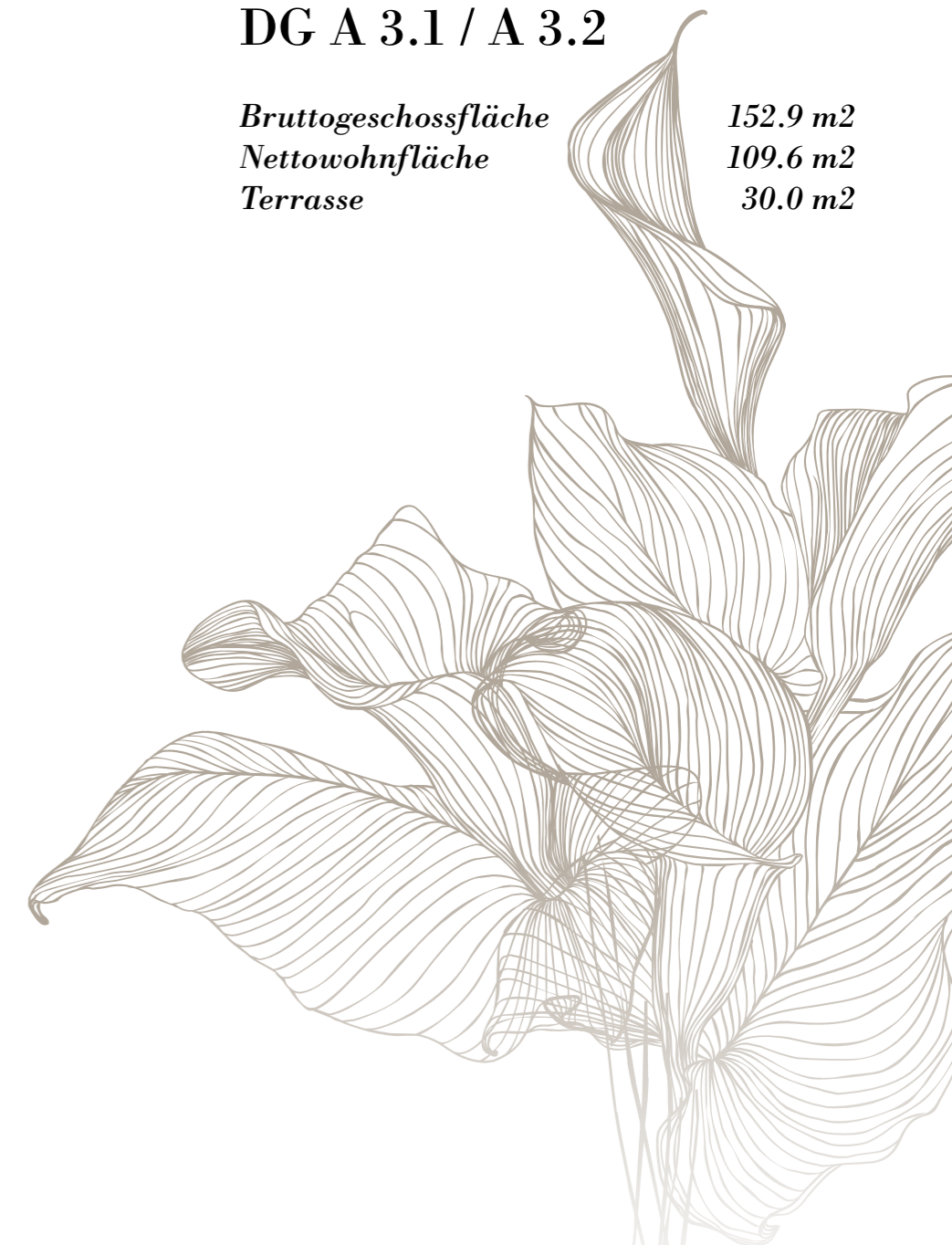
152.9 m<sup>2</sup>

Nettowohnfläche

109.6 m<sup>2</sup>

Terrasse

30.0 m<sup>2</sup>

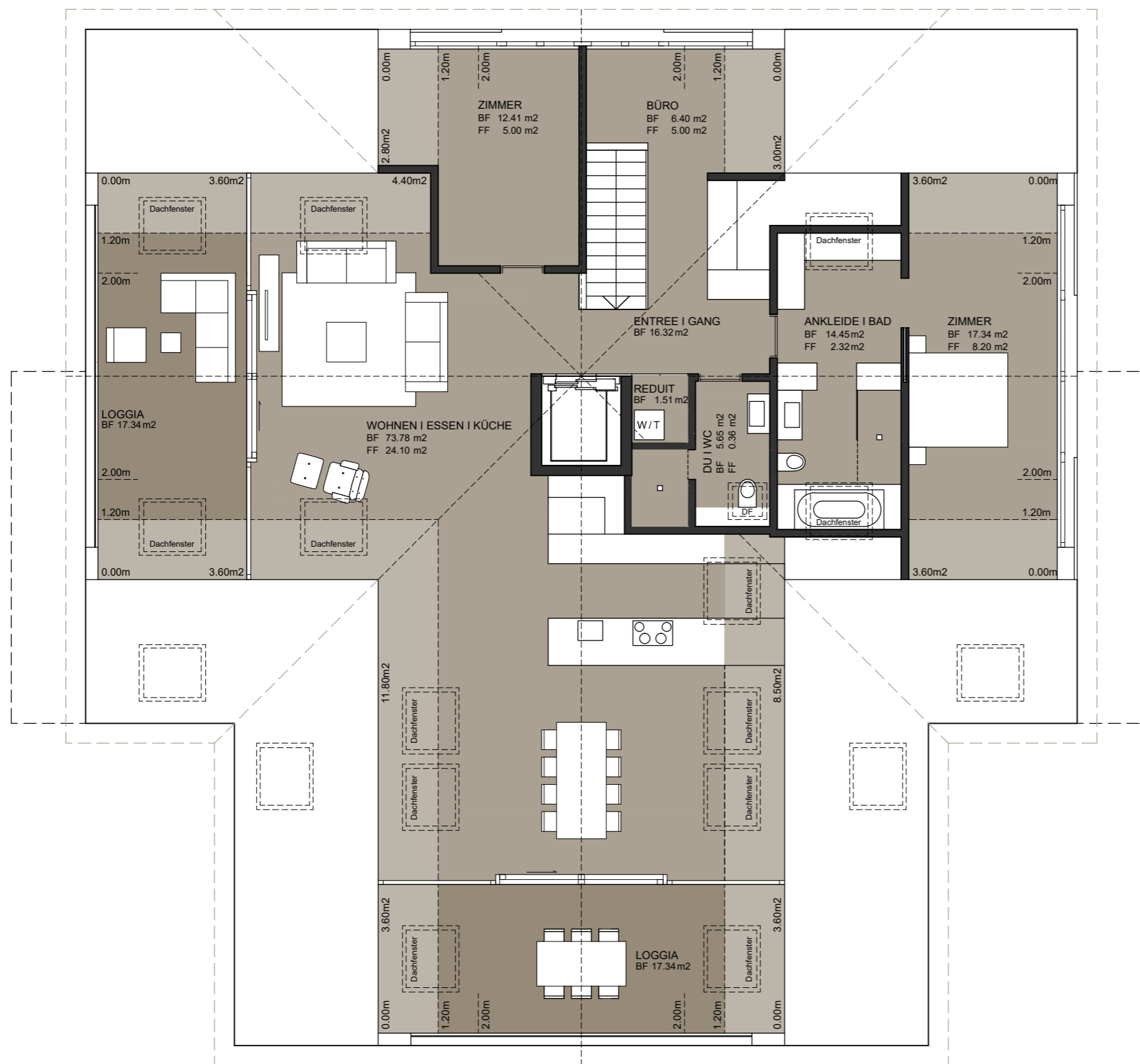




# GARDEN VIEW

Bottighofen

A 4.1



## 4 ZIMMER-WOHNUNG DACHLOFT A 4.1

<i>Bruttogeschossfläche</i>	214.0 m <sup>2</sup>
<i>Nettowohnfläche</i>	147.9 m <sup>2</sup>
<i>Terrasse</i>	34.7 m <sup>2</sup>

