

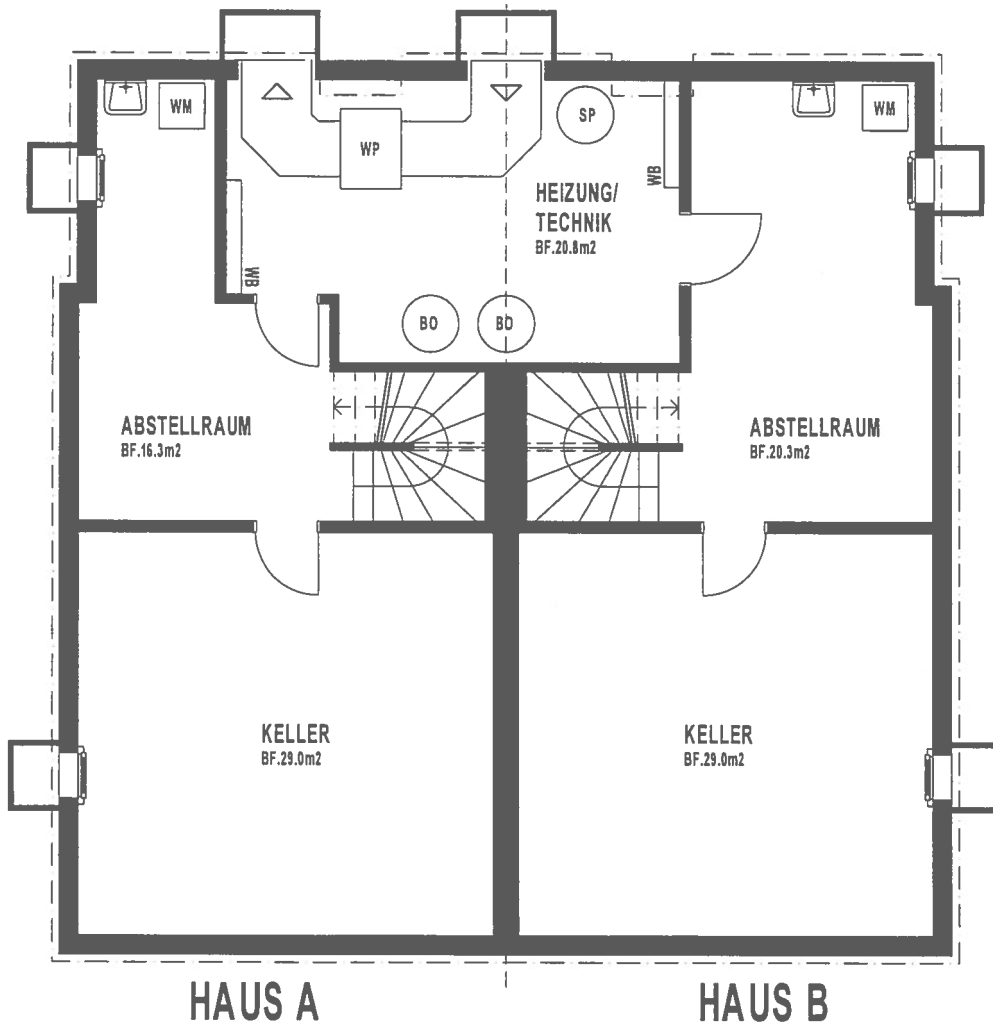
0.0m 7.5m

NR. 300 CA DAT: 04.04.23 REV: 02.08.23
 GASSER & PARTNER ARCH. AG, 8180 BÜLACH



UMGEBUNG
 DEFH BLUMENWEG

1:150
 8180 BÜLACH



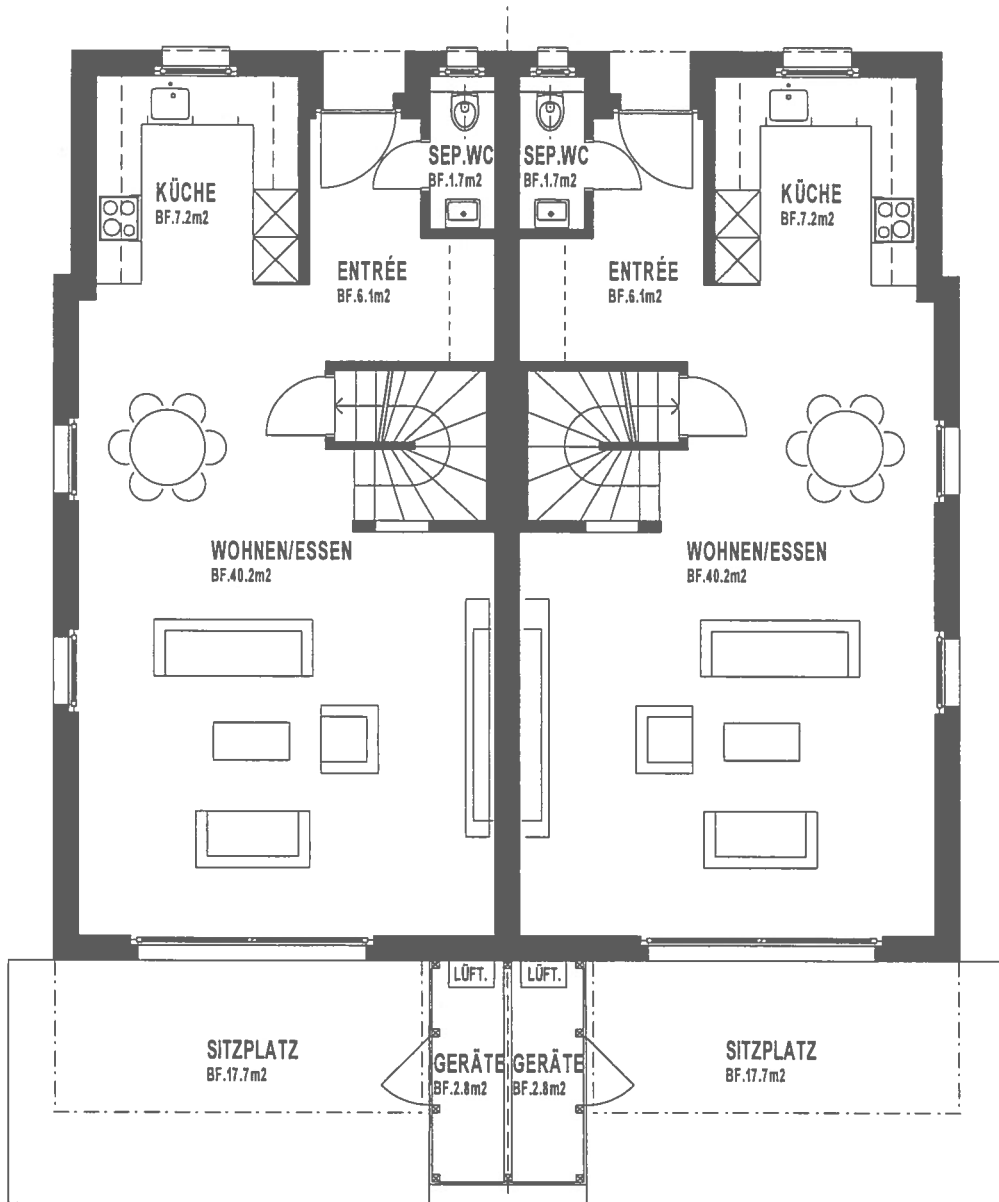
0.0m 5.0m

NR. 301 CA DAT: 04.04.23 REV: 04.04.23
 GASSER & PARTNER ARCH. AG, 8180 BÜLACH



UNTERGESCHOSS
 DEFH BLUMENWEG

1:100
 8180 BÜLACH



HAUS A

HAUS B

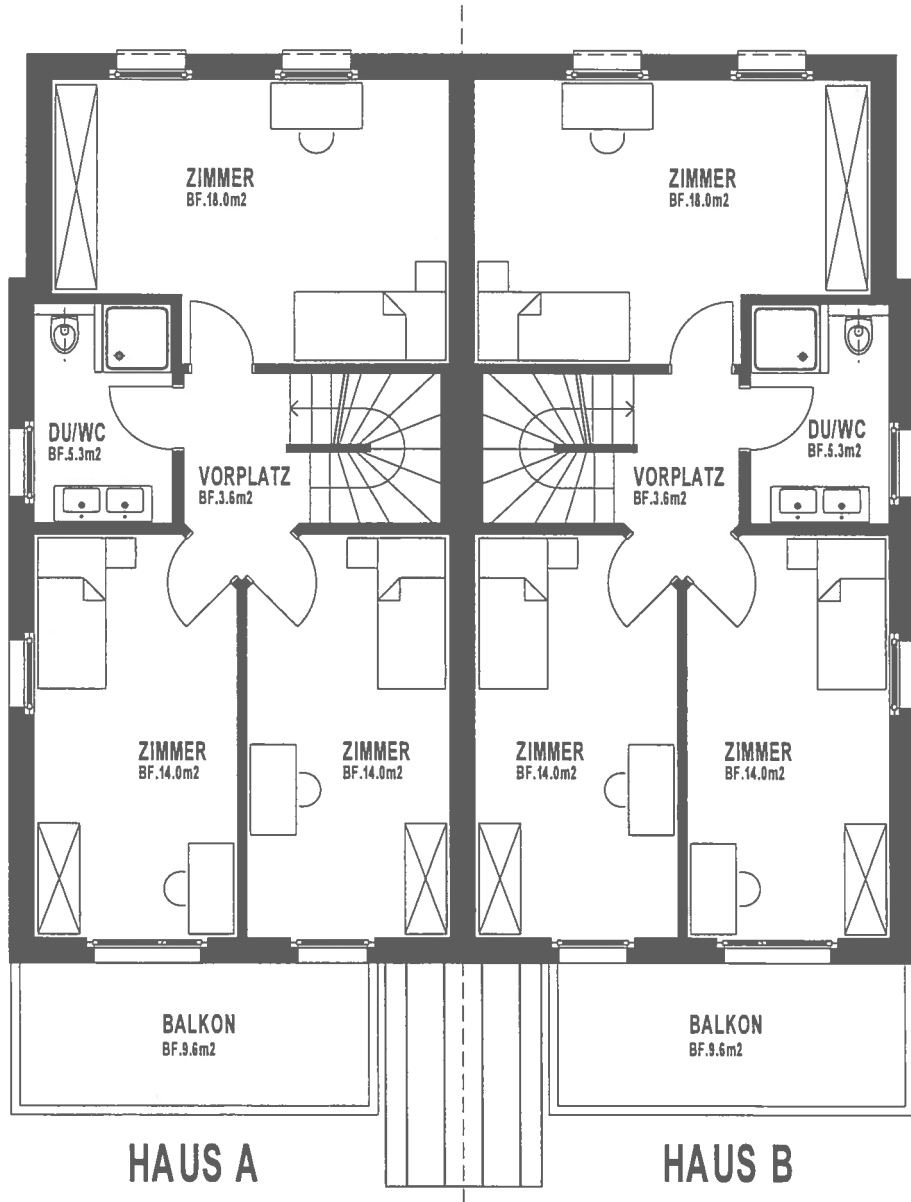
0.0m 5.0m

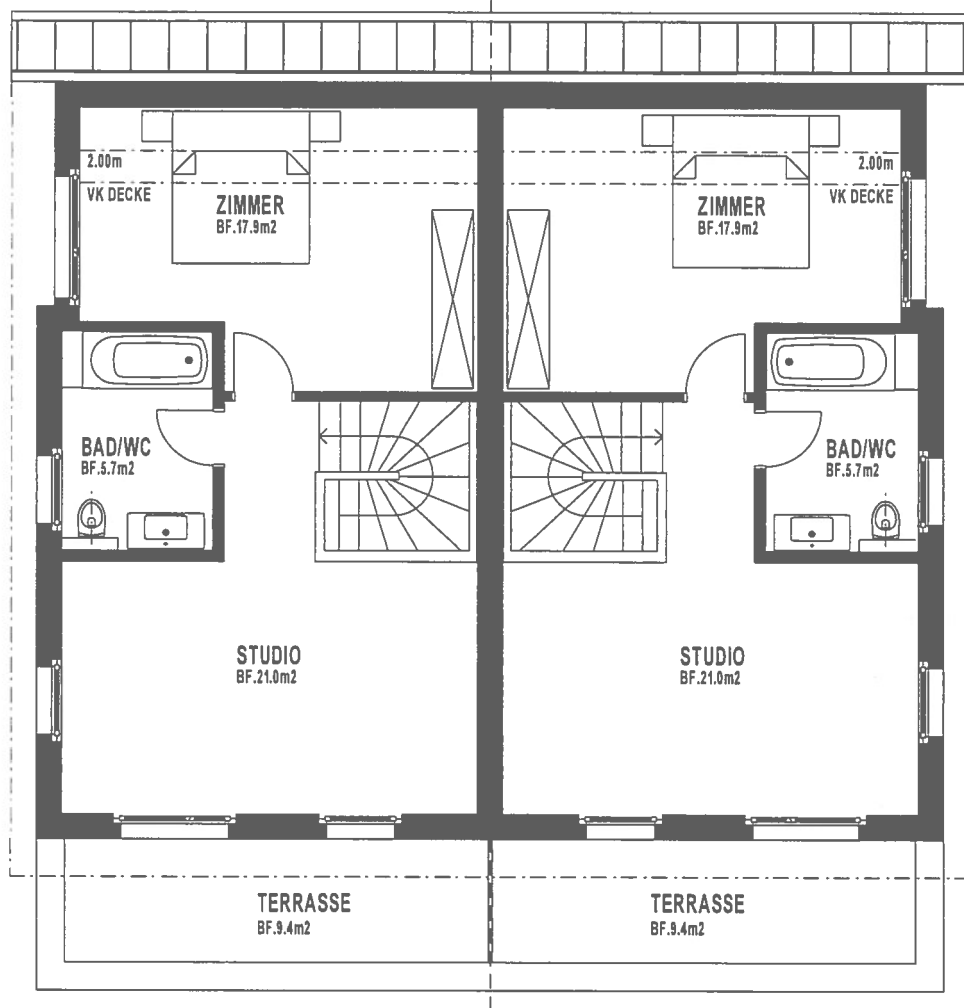
NR. 302 CA DAT: 04.04.23 REV: 04.04.23
 GASSER & PARTNER ARCH. AG, 8180 BÜLACH



ERDGESCHOSS
 DEFH BLUMENWEG

1:100
 8180 BÜLACH





HAUS A

HAUS B

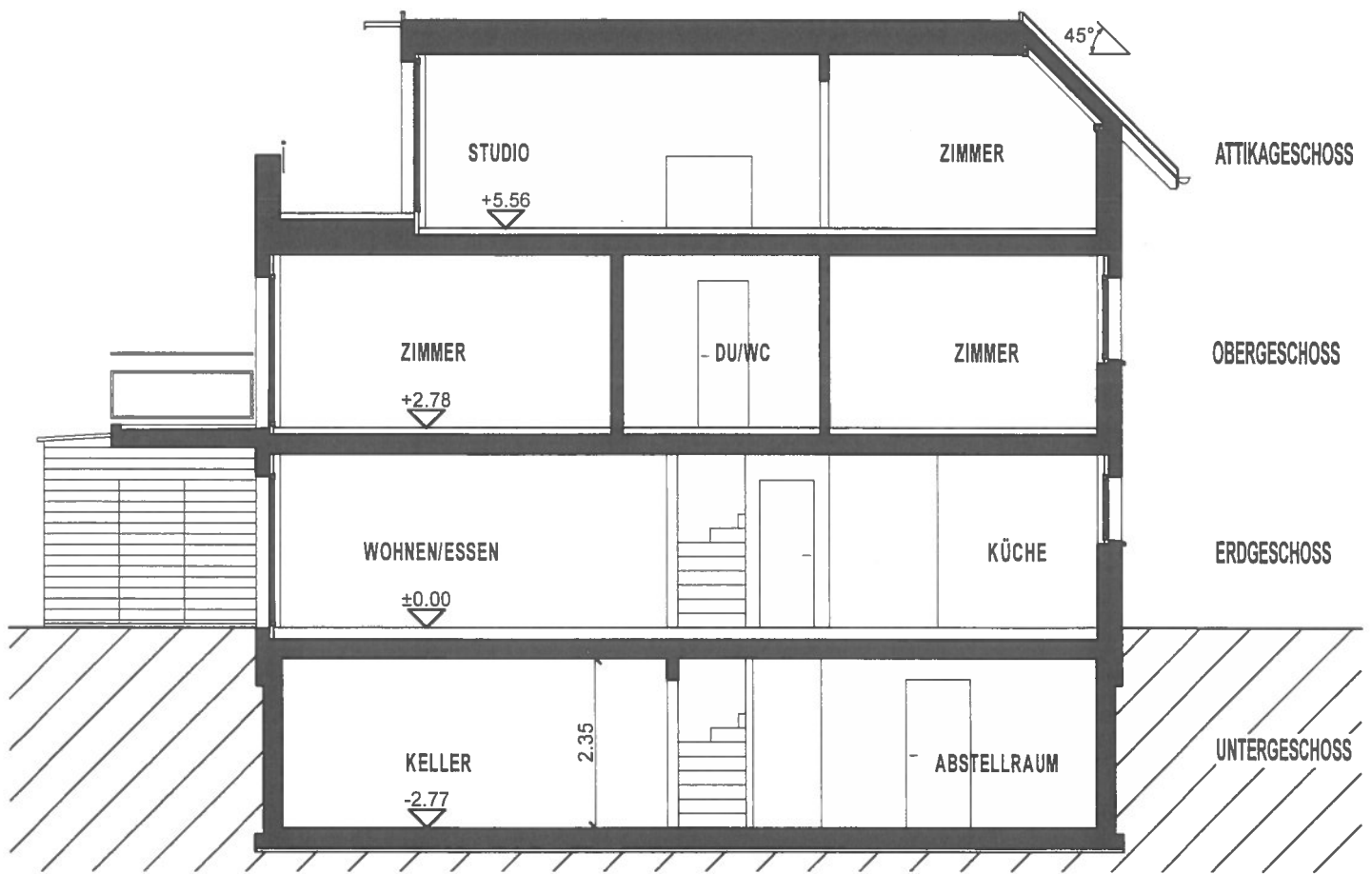
0.0m  5.0m

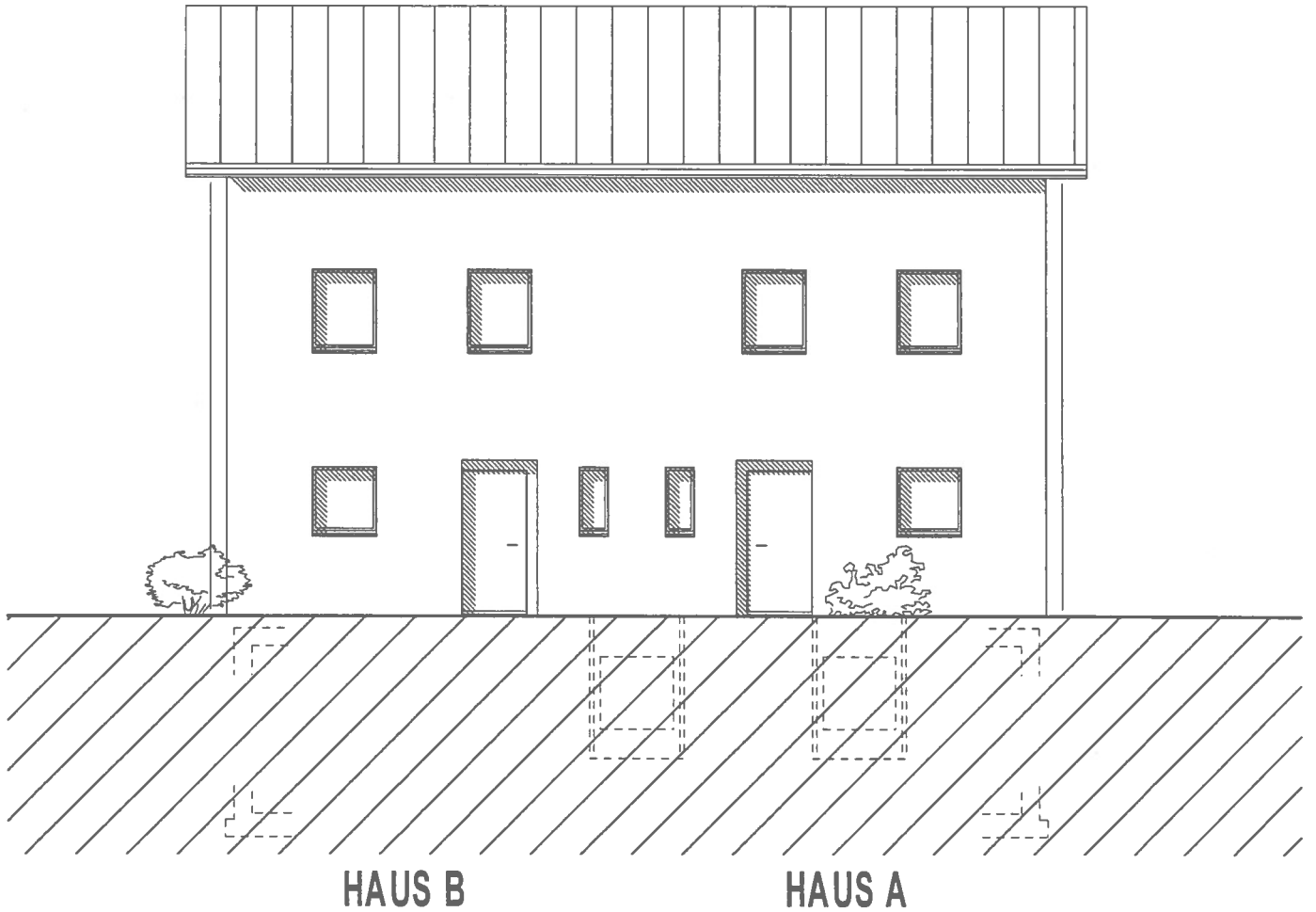
NR. 304 CA DAT: 04.04.23 REV: 04.04.23
 GASSER & PARTNER ARCH. AG, 8180 BÜLACH



ATTIKAGESCHOSS
 DEFH BLUMENWEG

1:100
 8180 BÜLACH

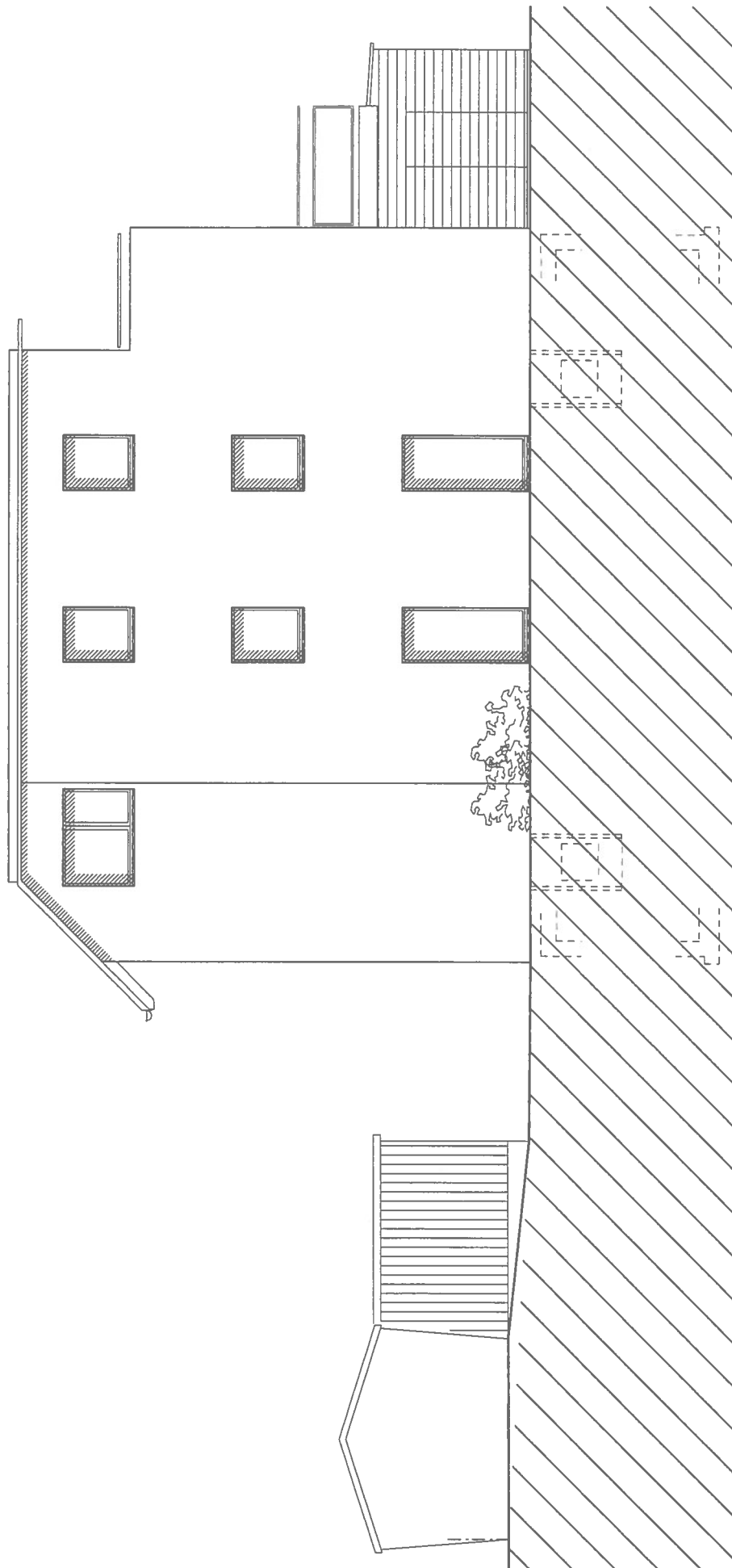




0.0m 5.0m
NR. 306 CA DAT: 04.04.23 REV: 04.04.23
GASSER & PARTNER ARCH. AG, 8180 BÜLACH

NORDFASSADE
DEFH BLUMENWEG

1:100
8180 BÜLACH

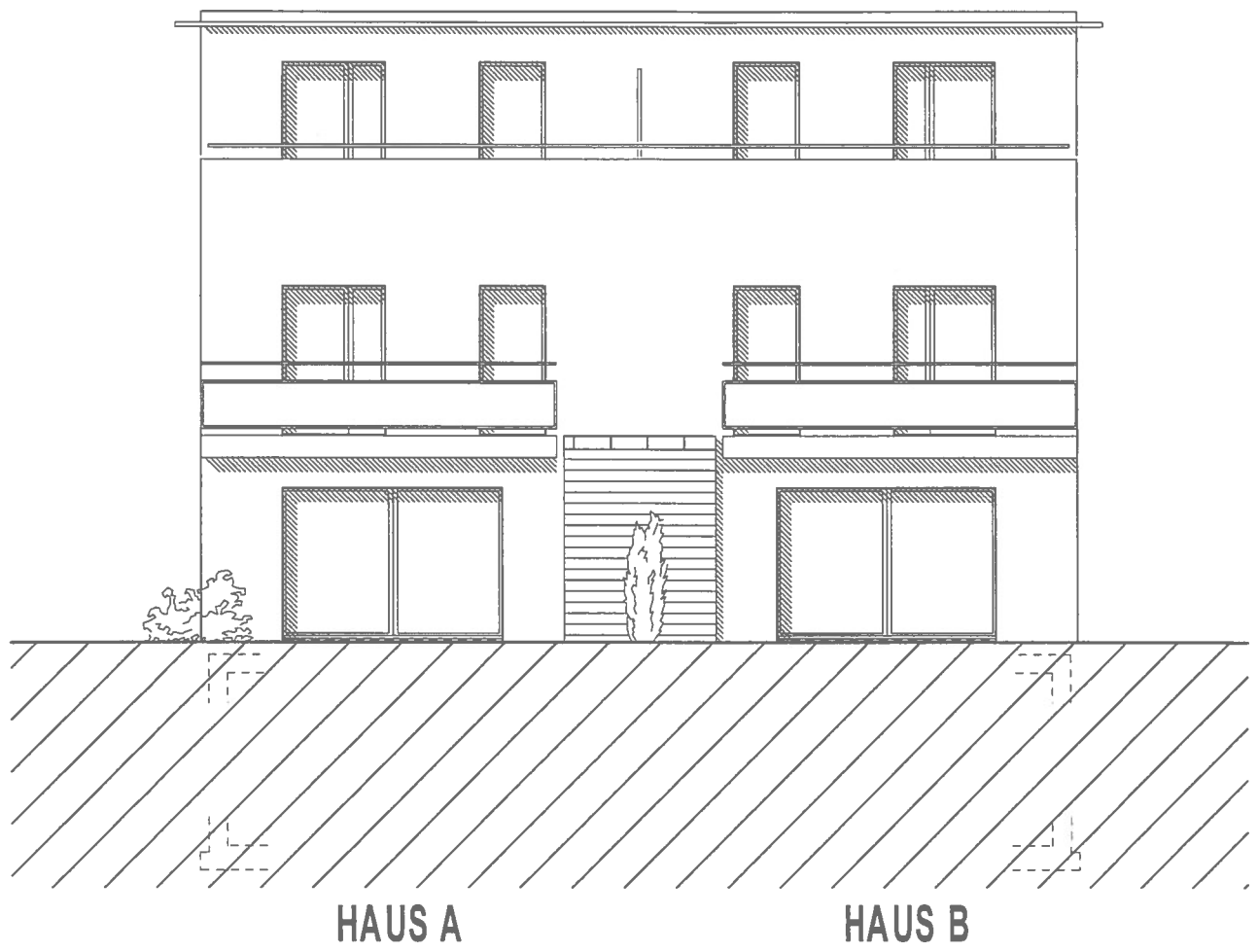


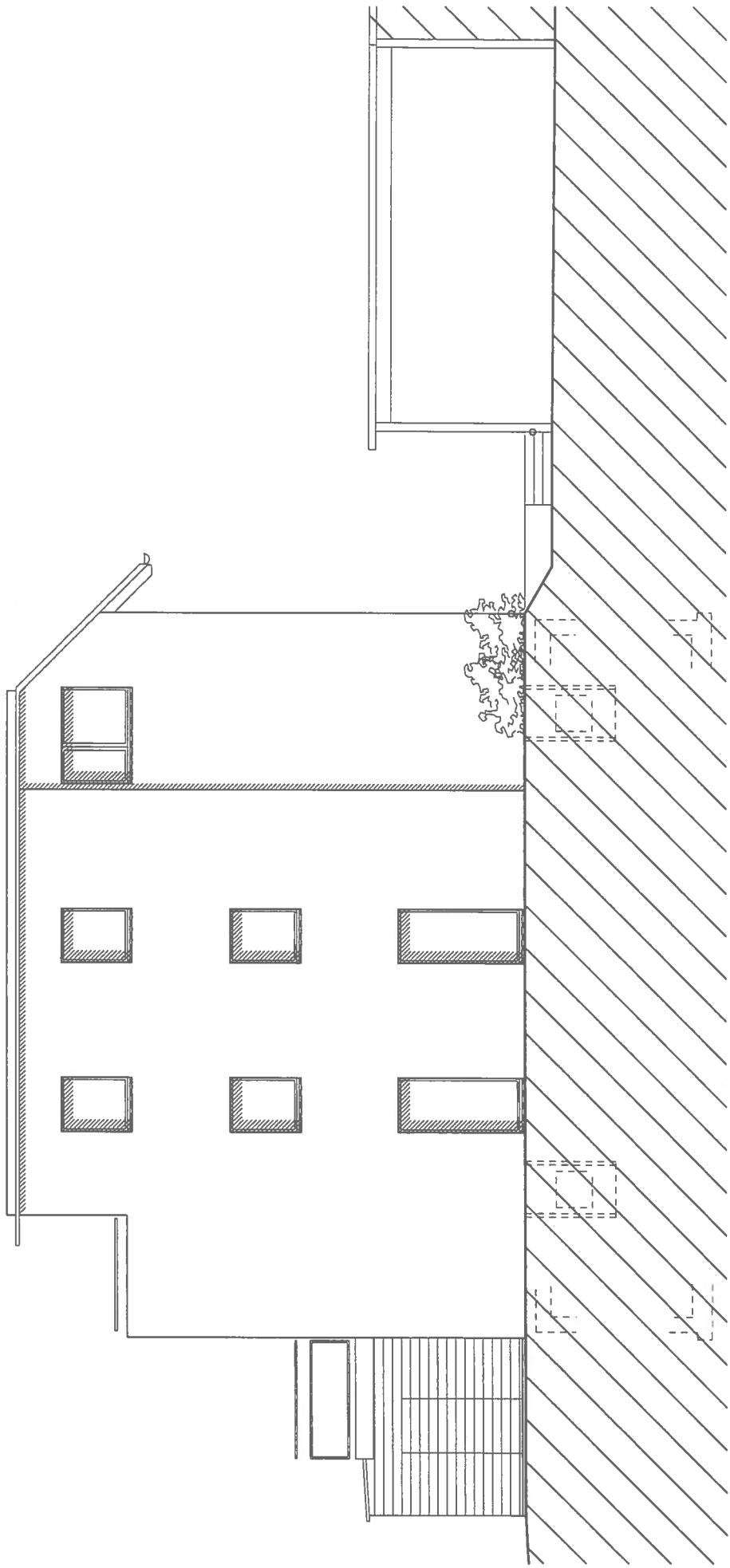
HAUS A

0.0m 5.0m
NR. 309 CA DAT: 04.04.23 REV: 02.08.23
GASSER & PARTNER ARCH. AG, 8180 BÜLACH

WESTFASSADE
DEFH BLUMENWEG

1:100
8180 BÜLACH





HAUS B

0.0m 5.0m
NR. 307 CA DAT: 04.04.23 REV: 04.04.23
GASSER & PARTNER ARCH. AG, 8180 BÜLACH

OSTFASSADE
DEFH BLUMENWEG

1:100
8180 BÜLACH